

Wellbeing Fund - Round One Applications Initial Analysis

Key Information:

- The £50 million Wellbeing Fund is part of the £350 million emergency coronavirus funding announced by the Communities Secretary on 18 March.
- It is providing immediate support to third sector organisations providing crucial services to people as a result of coronavirus.
- £7 million has been allocated for small grants and support¹ and a further £10 million has been committed for immediate national priorities².
- The remaining £33 million is open to applications from third sector organisations, with grants available between £5,000 and £100,000.³
- Round one opened to expressions of interest on 13 April 2020. More than 1,600 were registered over a 7-day period. On 20 April, 1,686 third sector organisations were invited to apply by completing a simple application form.
- 1,004 applications for round one had been received by the closing date of midnight on Thursday 30 April worth around £25 million. The majority of applications have been assessed and we are working towards all decisions being made by 12 May.
- On 8 May 2020, the second round opened to applications, this time with no 'expressions of interest' stage. The second round is open to all third sector organisations that did not apply or receive funding from the first round.
- Applications from organisations working to support people facing financial or employment difficulties are being particularly encouraged, as well as applications from organisations working with minority communities.
- The deadline for round two applications is noon 22 May 2020.

More information about the Wellbeing Fund, including how to apply, is available at: <https://scvo.org.uk/support/coronavirus/funding/scottish-government/wellbeing-fund>.

Will Tyler-Greig
Scottish Government

¹ More than 1,300 third sector organisations have already been offered a small grant and all of Scotland's 32 Third Sector Interfaces have been offered a 25% funding boost to help co-ordinate and support the work of local charities and social enterprises.

² More than 50 projects have received support with recent awards including Scottish Women's Aid, Chest, Heart and Stroke Scotland and Age Scotland.

³ To help make accessing funding as simple as possible, additional funding from the Food Fund has been added to enhance the reach of the Wellbeing Fund. There is no separate application process for third sector organisations to access the Food Fund.

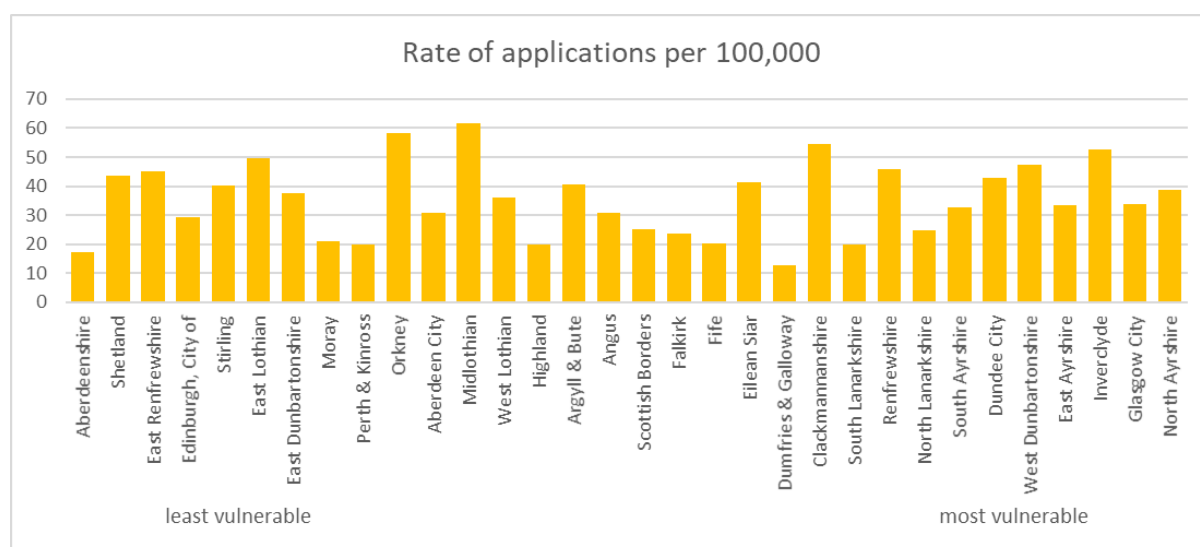
Analysis of Applications to Round One

Geography

Applications spanned all local authorities. The majority of applications were from organisations working within a single local authority (32 percent), followed by a specific community (27 percent) and across multiple local authorities (23 percent). Only 18 percent of applications reported activity would take place across Scotland.

	Applications	Amount
Across Scotland	183 (18%)	6,861,049 (27%)
Across Multiple Local Authorities	226 (23%)	7,765,907 (31%)
Across Single Local Authority	323 (32%)	6,464,565 (25%)
Within a Specific Community (town, village, neighbourhood)	272 (27%)	4,317,574 (17%)
	1,004	25,409,095

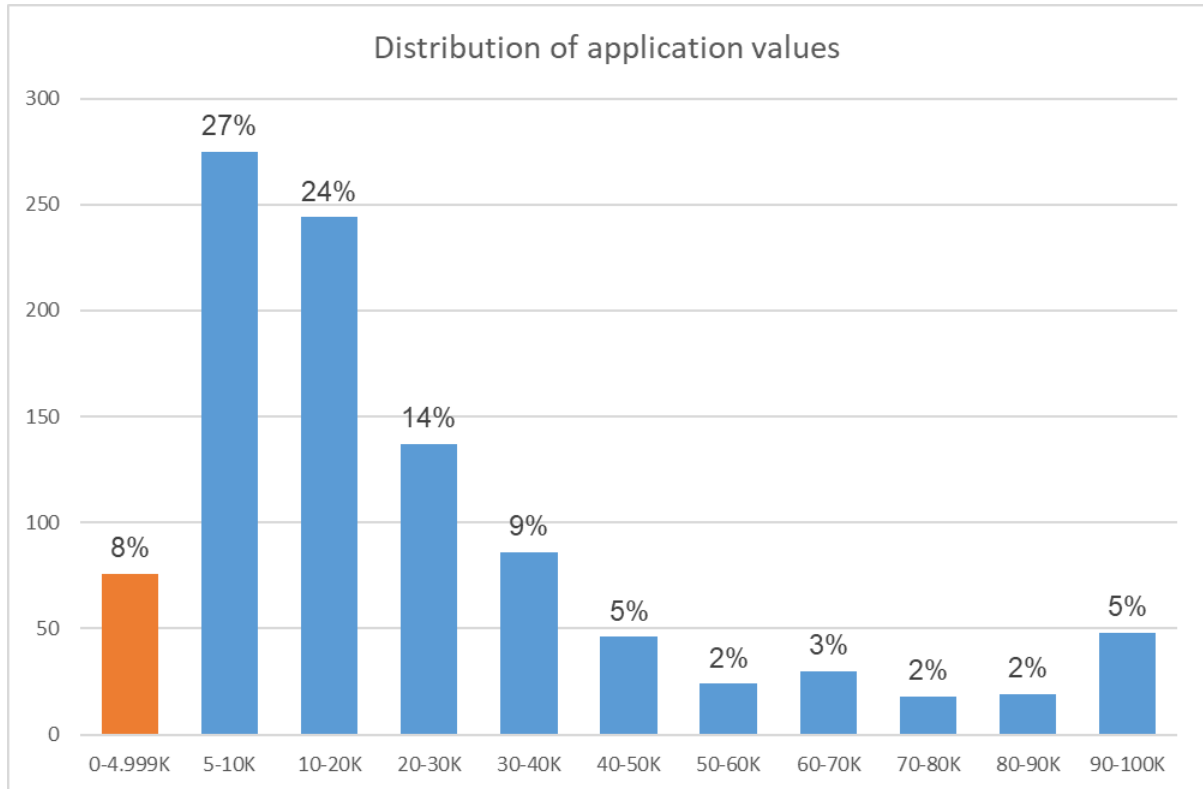
The highest rates of applications per 100,000 people were Midlothian, Orkney, Clackmannanshire and Inverclyde (more than 50 applications per 100,000 people). The lowest rates of applications per 100,000 people Aberdeen and Dumfries and Galloway (less than 20 applications per 100,000 people).



Further information is available at **Annex A**.

Amount Sought

The average grant sought was £25,328. Eight percent of applications were for less than £5,000 and therefore not eligible for funding. More than half were for between £5,000 and £20,000. Only 14 percent were for values of £50,000 or above.

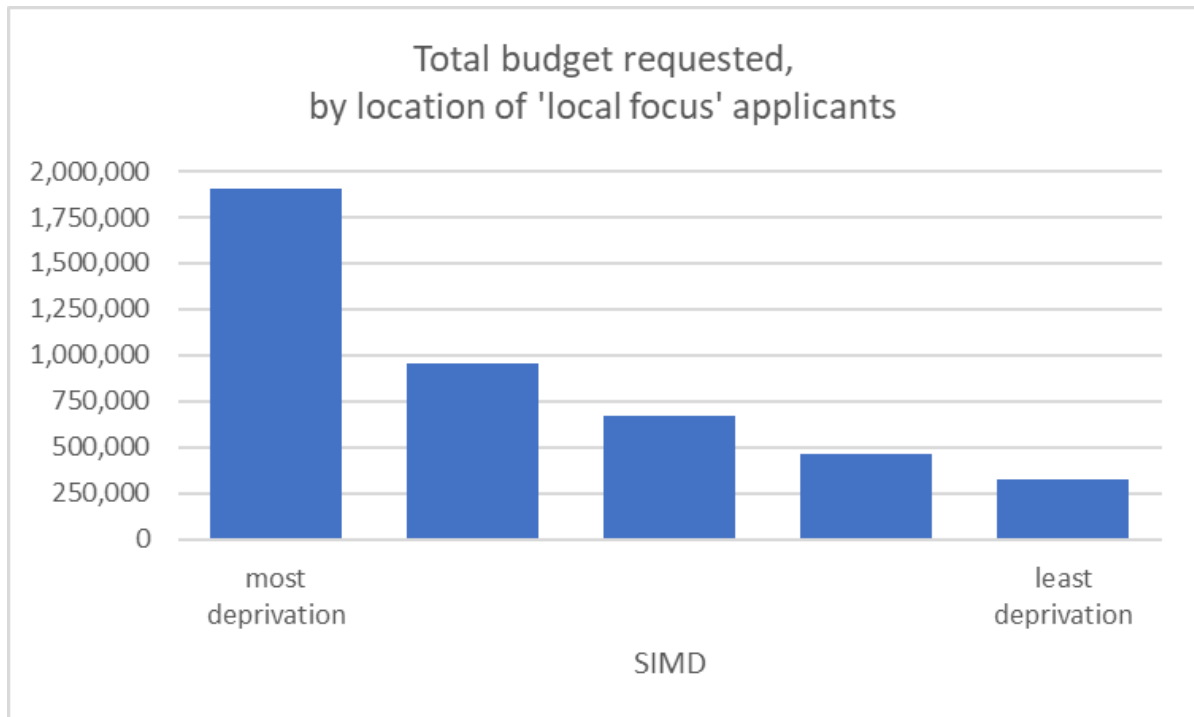


Around a quarter of applications to the Wellbeing Fund were received on the last day of round one being open.

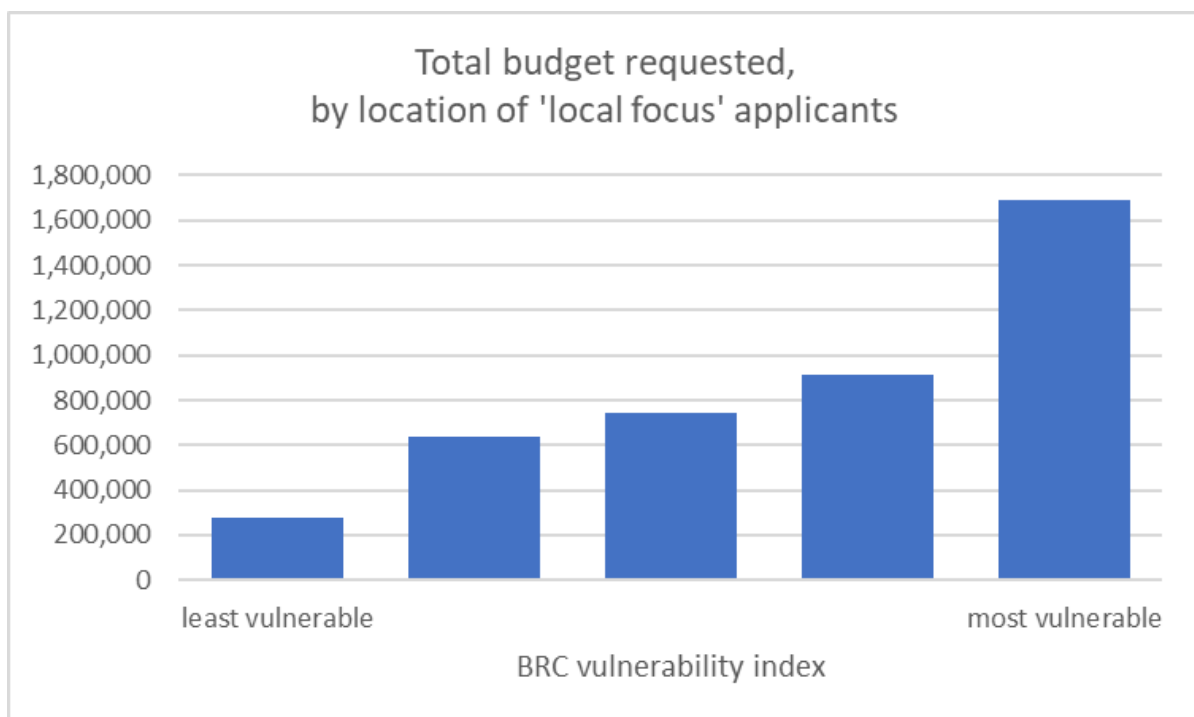
Targeting

Early analysis indicates good targeting of applications towards areas of deprivation (Scottish Index of Multiple Deprivation) and those experiencing greater vulnerability (British Red Cross Vulnerability Index).

Scottish Index of Multiple Deprivation



British Red Cross Vulnerability Index

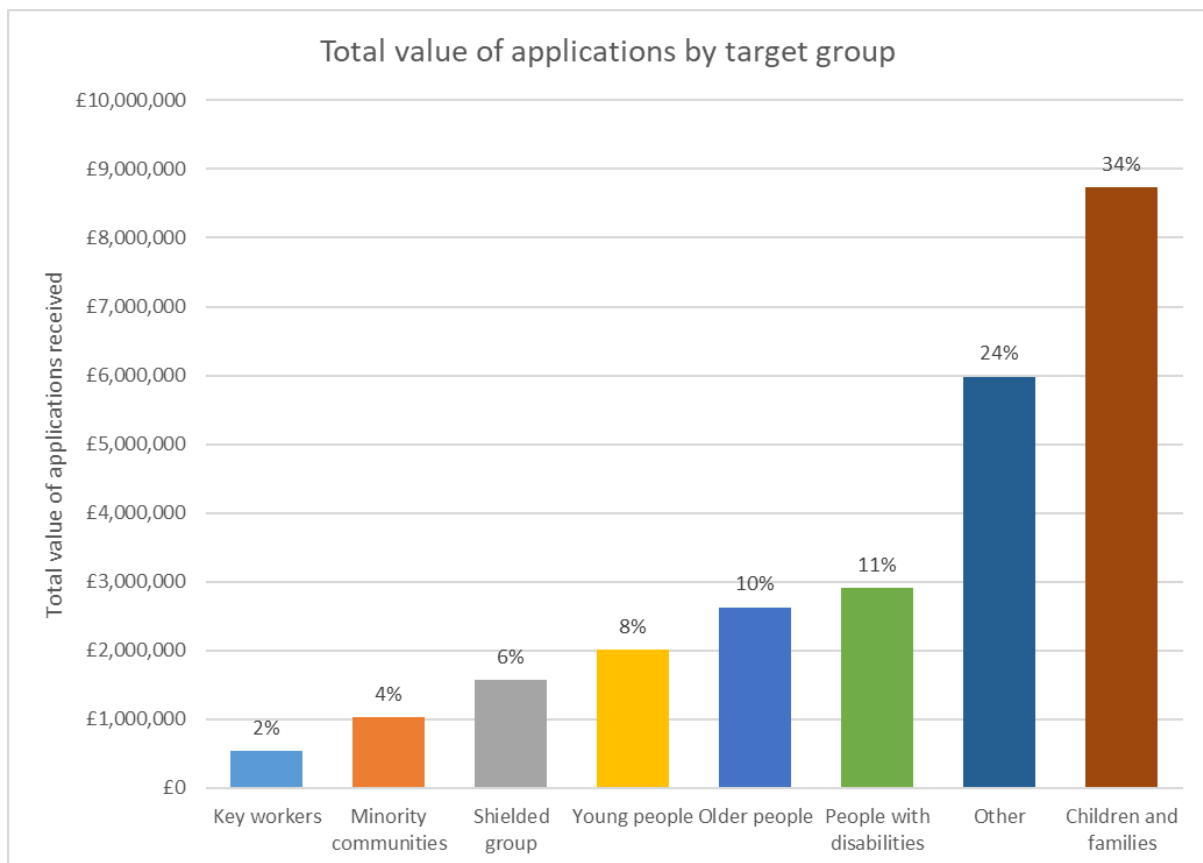


Beneficiary Group

The most common beneficiary group reported in round one applications was 'children and families' followed by 'older people'.

Target Group	Applications	%
Children and Families	331	33
Older People	135	13
Disabled People	102	10
Young People	92	9
Minority Communities	60	6
Shielded Group	52	5
Key Workers	14	1
Other	217	22

Analysis of the 'other' category highlighted 65 references to mental health, 22 to homelessness, eight relating to drug/ alcohol, seven to victims of abuse, four to prisoners, two mentioning asylum seekers and one referring to prostitution.

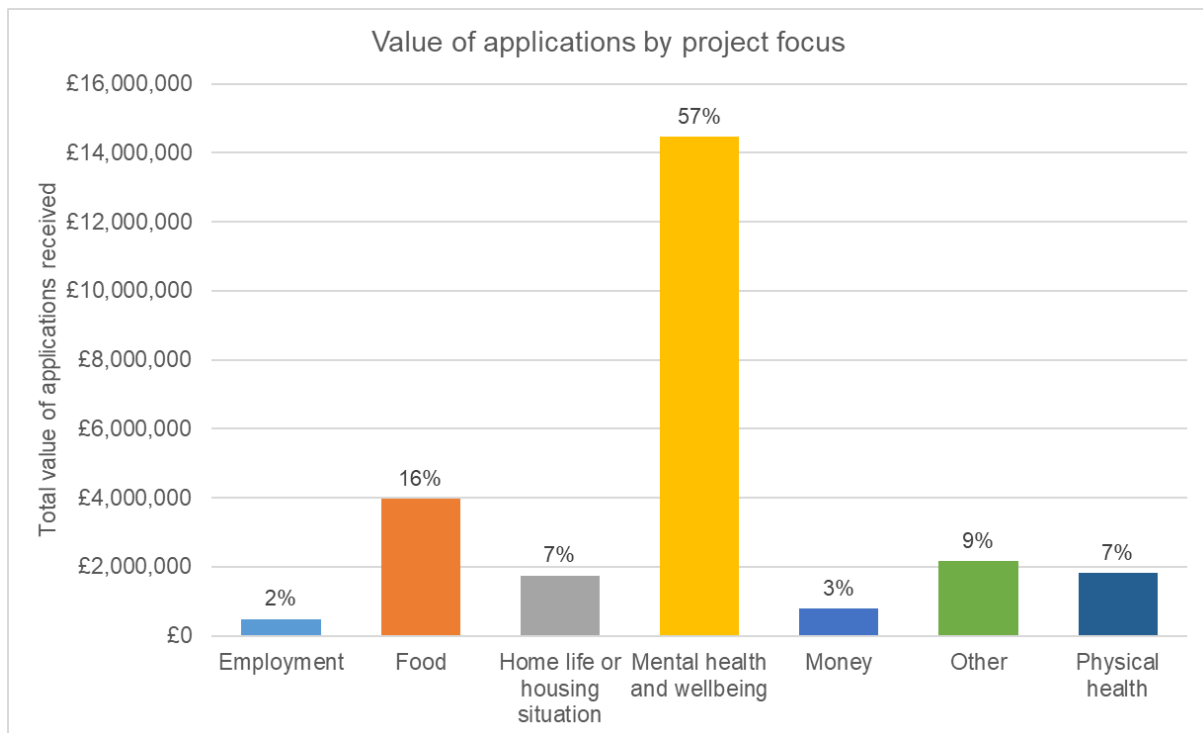


Project Activity

A wide range of activities were proposed by applicants. From creative learning packs, online exercise classes and increased phone contact to support the mental health and wellbeing of veterans and young people, to grocery and baby essential parcels for those who are self-isolating.

Almost 60% of projects (worth more than £14 million) were aimed at supporting mental health and wellbeing, with around 20% (worth £4 million) relating to food preparation and distribution.

Activity	Applications	%
Mental Health and Wellbeing	590	59
Food	197	20
Physical Health	63	6
Other	61	6
Home life or housing	49	5
Money	26	3
Employment	17	2



Annex A - Local authority-level summary

	Count of applications	Sum applied for	Total Population 2018	Rate of applications per 100,000	Amount per person	% aged 70+	SPHO vulnerability ranking
Aberdeen City	70	1,158,952	228,670	31	5.07	11%	11
Aberdeenshire	45	874,857	261,210	17	3.35	13%	1
Angus	36	504,461	116,200	31	4.34	17%	16
Argyll & Bute	35	523,000	85,870	41	6.09	18%	15
Clackmannanshire	28	180,272	51,540	54	3.50	14%	22
Dumfries & Galloway	19	381,087	148,860	13	2.56	18%	21
Dundee City	64	801,159	149,320	43	5.37	13%	27
East Ayrshire	41	583,120	122,010	34	4.78	14%	29
East Dunbartonshire	41	392,080	108,640	38	3.61	16%	7
East Lothian	53	563,820	107,090	49	5.26	14%	6
East Renfrewshire	43	206,635	95,530	45	2.16	14%	3
Edinburgh, City of	154	3,457,764	524,930	29	6.59	11%	4
Eilean Siar	11	216,648	26,720	41	8.11	18%	20
Falkirk	38	478,193	160,890	24	2.97	13%	18
Fife	76	1,337,191	373,550	20	3.58	14%	19
Glasgow City	213	4,704,226	633,120	34	7.43	9%	31
Highland	47	1,021,697	235,830	20	4.33	15%	14
Inverclyde	41	356,592	77,800	53	4.58	15%	30
Midlothian	57	431,747	92,460	62	4.67	13%	12
Moray	20	300,996	95,820	21	3.14	15%	8
North Ayrshire	52	570,941	134,740	39	4.24	16%	32
North Lanarkshire	84	1,257,734	341,370	25	3.68	12%	25
Orkney	13	126,640	22,270	58	5.69	17%	10
Perth & Kinross	30	544,409	151,950	20	3.58	17%	9
Renfrewshire	82	744,194	179,100	46	4.16	13%	24
Scottish Borders	29	367,164	115,510	25	3.18	17%	17
Shetland	10	188,701	22,920	44	8.23	14%	2
South Ayrshire	37	333,738	112,610	33	2.96	18%	26
South Lanarkshire	64	993,968	320,530	20	3.10	13%	23
Stirling	38	416,297	94,210	40	4.42	14%	5
West Dunbartonshire	42	418,125	88,930	47	4.70	13%	28
West Lothian	66	967,687	183,100	36	5.29	11%	13